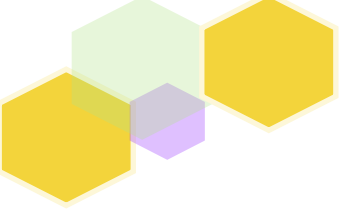


The 4th Winter School Report

December 4 - 21, 2018





Overview of the 4th Winter School Program

Objectives:

In April 2019, Gifu University will launch international Joint Degree Programs with both Indian Institute of Technology, Guwahati (IITG) and Universiti Kebangsaan Malaysia (UKM). The Winter School is designed to provide opportunities to students from those institutions who are considering graduate studies a better understanding of Gifu University and Japan. The participants learn Japanese language and culture, engage in laboratory work and visit industry-related companies. Gifu University hopes that the participants will serve as a bridge between IITG/UKM and Gifu University, and play a role in fostering mutual understanding for years to come.

Number of Participants:

5 students from IITG (4 male and 1 female; 3 undergraduates, 1 master's and 1 doctoral student)

3 students from UKM (2 male and 1 female; 3 master's students)

Contents:

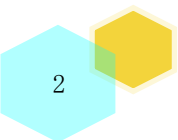
First Day (Orientation, Campus tour, Healthcare seminar, Opening ceremony and Welcome party)

Courtesy call to Gifu University President

Japanese Culture Experiences (Japanese class, JUNI-HITOE, Gujo excursion, Company tour)

Laboratory Work (Research studies and preparing accomplishment report)

Final Day (Accomplishment report session, Closing ceremony and Farewell party)



First Day

Orientation, Campus tour, Healthcare seminar, Opening ceremony and Welcome party



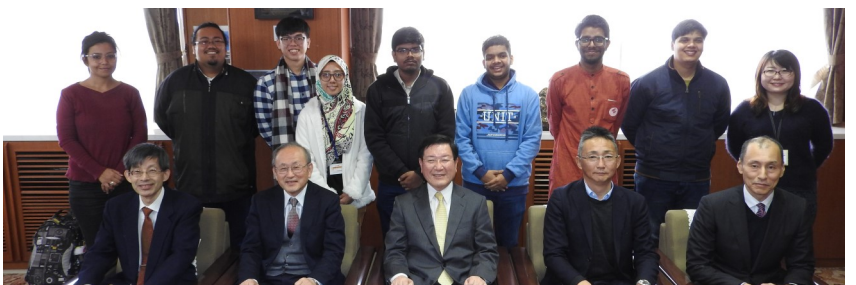
ORIENTATION AND HEALTHCARE SEMINAR

After a short orientation, the participants visited the Health Administration Center on campus. The Director of the center, Dr. Mayumi Yamamoto led a healthcare seminar explaining the national healthcare system of Japan, the role of the center and healthcare activities offered to the students.



OPENING AND WELCOME PARTY

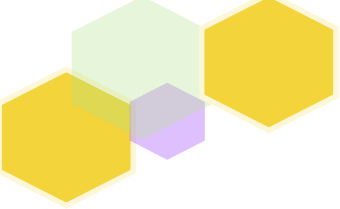
Opening ceremony and welcome party were held in Dining Hall No.2. After the opening speech by Dr. Fumiaki Suzuki (Executive Director for International Affairs and Public Relations, Vice President), the participants introduced themselves and enjoyed communicating with their supervisors and Japanese students.



COURTESY CALL TO UNIVERSITY PRESIDENT



The participants and their supervisors paid a courtesy call to Dr. Hisataka Moriwaki, President of Gifu University. They held cordial exchanges about their universities and research themes.



Japanese Culture Experiences

Japanese class, JUNI-HITOE, Gujo excursion, Company tour



JUNI-HITOE

On December 12, the participants took part in a Japanese culture workshop organized by the Center for Japanese Language and Culture. They listened attentively to the lecture and witnessed a demonstration of one Gifu University international student being dressed up in layered kimonos. After the lecture, they had a chance to try it on.



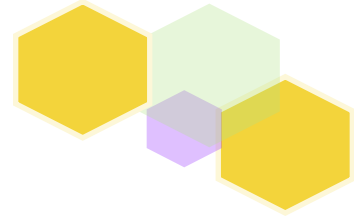
JAPANESE CLASS

Basic Japanese lessons were offered to the participants in the Center for Japanese Language and Culture. The participants learned "Survival Japanese" over a total of nine-hour class sessions. They demonstrated what they had learned by presenting a short introductory speech in Japanese at the accomplishment report session.



GUJO EXCURSION

One day trip to Gujo, central region of Gifu Prefecture, was newly arranged to introduce traditional cuisine culture and regional folk arts to the participants. This trip was also planned with the aim to contribute to the tourism resources development of the region. The participants enjoyed making local dishes, playing Wadaiko Japanese drums and experiencing "Ji-kabuki" performances, theatricals played by local amateurs. We would like to express our gratitude to the people of Gujo for their kind hospitality to the participants.

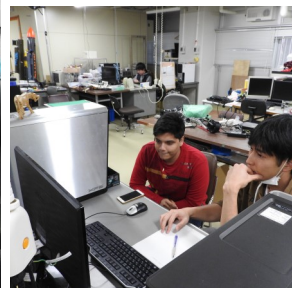
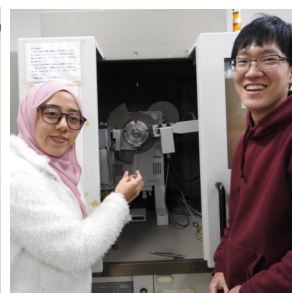
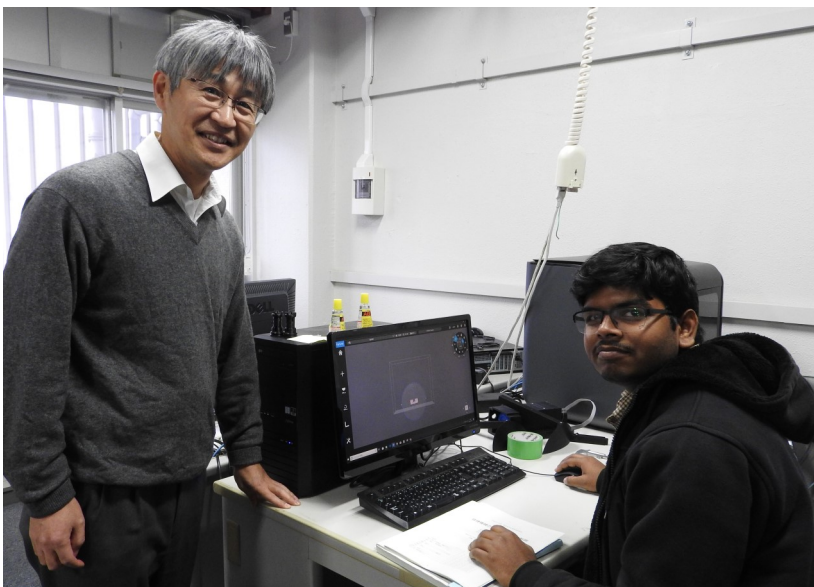


JAPANESE COMPANY TOUR

This tour was set up for the participants to learn more about Japanese companies. The participants had a chance to visit big companies in Tokyo for the first time this year. They took a company tour of Mitsubishi Chemical Corporation, Central Laboratory of Yamazaki Baking Co., Ltd. and Nisshin Seifun Group Inc. We would like to express our appreciation to all the staff of the companies for offering a warm welcome to the participants.

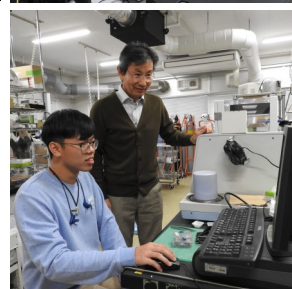
Laboratory Work

Research studies and preparing accomplishment report



LABO. WORK

The participants enjoyed their laboratory work under Gifu University professors.



Final Day

Accomplishment report session, Closing ceremony and Farewell party



ACCOMPLISHMENT REPORT SESSION

On the final day, December 21, accomplishment report session was held in Yanagido Hall. In addition to the supervisors and laboratory members, Dr. Moriwaki and Dr. Suzuki joined this session. The participants gave a short speech using the Japanese which they had learned during their stay, and explained their laboratory work with their posters. Despite only three weeks for their research activities, the participants did their best and looked confident of their achievements.

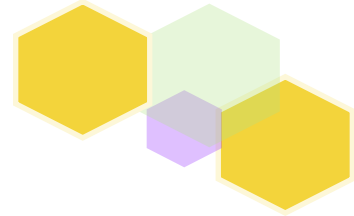


CLOSING CEREMONY AND FAREWELL PARTY

At the closing ceremony, Dr. Suzuki awarded the Certificate of Completion to each participant. The ceremony was followed by a farewell party and the participants interacted with each other in a pleasant atmosphere. A wonderful short movie filmed at the Gujo excursion was projected during the party and they watched it talking about their memories of their stay in Gifu. They seemed to regret saying goodbye and to expect to reunite again. The 4th Winter School Program was completed successfully.

Questionnaire to Participants

- Extracted data -

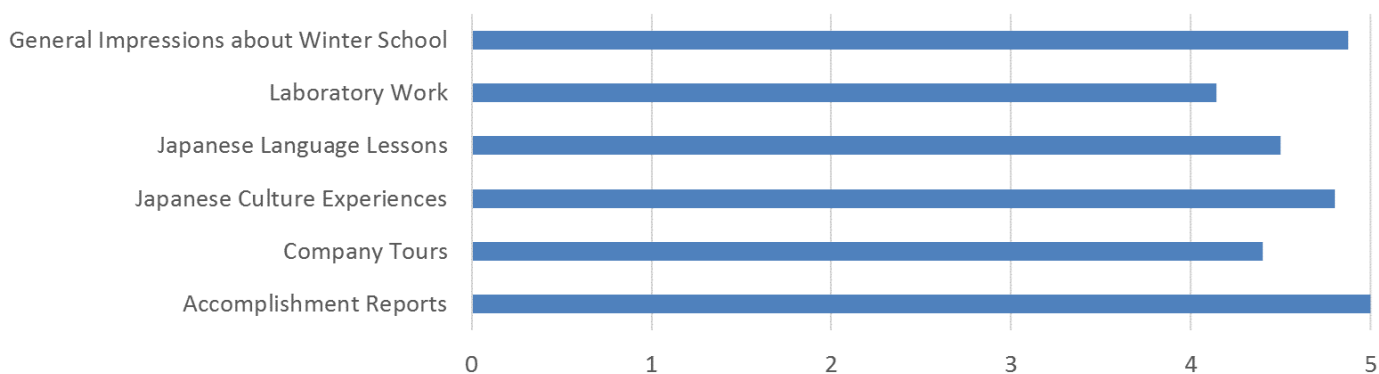


1. Participants information

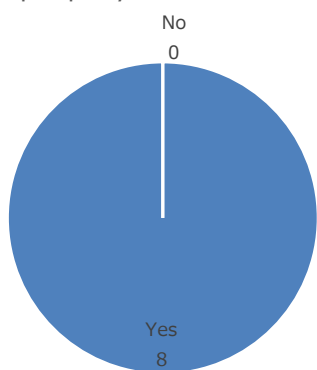
Males	6
Females	2
Average age	21

Gifu University	IITG/UKM
Faculty of Applied Biological Sciences	Bioscience and Bioengineering
	Environmental Biotechnology
Faculty of Engineering	Mechanical Engineering
	Computer Science and Engineering
	Chemistry
	Fuel Cell Engineering

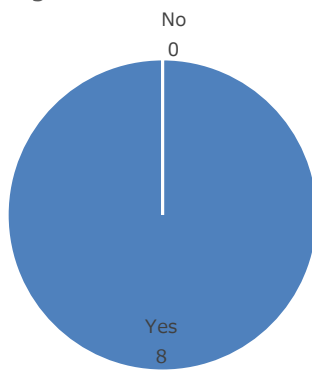
2. Satisfaction with the 4th Winter School Program



Q. Would you recommend the Winter School Program to the people you know?



Q. Are you happy with the overall arrangements of the program?

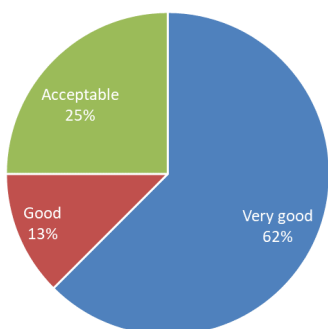


Comments:

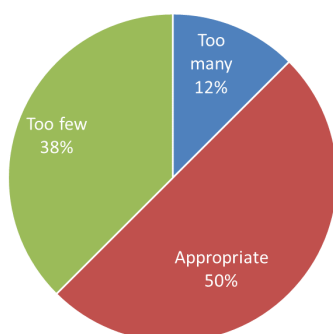
- Provided every information and worked hard to make our life and stay comfortable.
- The schedule for all programs were well planned and I did not feel any discomfort by it.

3. Satisfaction with Laboratory Work

Supervisors Instruction

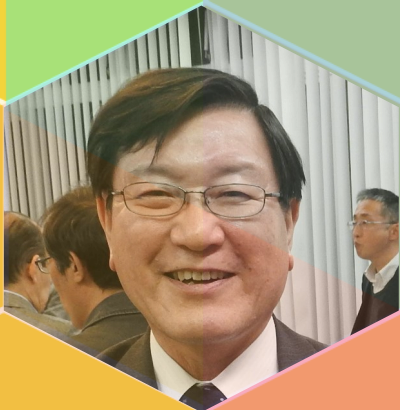


Laboratory Hours



Comments:

- Good natured and helping fellow member of laboratory. Supervisor helped as well as constantly took care of me in every possible way to work on the project during those 20 days. A good working environment in the laboratory.
- Best part about my lab work was that it was pre-planned. Everything was well organized. My supervisor was very helpful and welcoming.
- The supervisor helped me in learning the pre-requisites for my project, provided the instructions for future work in the project and never made me felt as an outsider.



Dr. Hisataka MORIWAKI
President, Gifu University

Excerpt from “Farewell Remarks to Gifu University Winter School Students” on December 21, 2018

All of you are aware, the joint degree programs between Indian Institute of Technology, Guwahati, the National University of Malaysia and Gifu University will finally launch in April 2019.

The Winter School program is an important stepping stone toward the start of joint degree programs and, I believe, the program has gained a big success due particularly to the extremely high quality of participants and also to the keen leadership of excellent teachers and support staff.

One of the most important objectives of this Program is early exposure to Japanese language, culture, and private sector companies. The program was carefully designed to provide you, the Winter School students a high motivation to return to Japan to pursue your academic career and studies in the future joint degree programs.

I also hope that your brief time in Gifu University and Gifu Prefecture was comfortable and pleasant in every aspect.

Lastly, I would like to take this opportunity to express my appreciation to all the supporters such as supervisors, administrative staff, local people in Gujo and members of companies.

I am sincerely looking forward to seeing all of you again in the near future in Japan or in your respective countries at the next learning stage.



Gifu University Head Office for Glocalization (GHOGL)
1-1 Yanagido, Gifu City, Gifu 501-1193, JAPAN