



## Mask Donations

With the COVID-19 pandemic raging around the globe, the strong bonds have been forged between Gifu University and our overseas partner universities through mask donations.

### Mask Donation to Assam University and NKU

August 26



As the whole world is still grappling with COVID-19, Gifu University stands together with our partner universities abroad. Donations of packages of 2,000 face masks were made in response to requests from the universities in nations severely hit by the pandemic, namely Assam University (India) and Northern Kentucky University (USA). We sincerely hope that these masks will help ensure the continued health and safety of students, faculty, and staff on campus. In times like these, the challenges posed by COVID-19 have emphasized the importance of standing together in solidarity with each other as our institutions continue to strengthen closer ties and commitments moving forward.



### Mask Donation from Guangxi University

April 15



A package of 2,000 face masks donated by one of our overseas partner universities, Guangxi University (China) was delivered to Gifu University this April. The much-needed masks at the time were distributed to the University Hospital and daycare centers on campus to combat the spread of the novel coronavirus.

Written on the package was a phrase taken from a poem composed by Wang Xiaolian (698-926), a Chinese diplomat that states: "Who says we are separated by a thousand "li" (miles)? For it casts its light upon both of us, each in a different land!" It serves as a reminder of the strong bond nurtured by our two universities for years despite geographical distances.



### Mask Donation from the PRC Consulate-General in Nagoya

May 19



As a token of gratitude for the emergency assistance provided by Japan during the peak of the COVID-19 outbreak in China in March, packages of protective masks and antibacterial tissue and wipes were delivered to Gifu University by Liu Xiaojun, Consul-General of the People's Republic of China in Nagoya. The distribution of these PPEs to health care workers at the University Hospital was vital due to the shortages of critical supplies at the time. Gifu University deeply appreciates the show of support and encouragement from the Chinese Consulate-General.





# International Events & Activities Held Despite Unprecedented Challenges Posted by the COVID-19 Outbreak

## English Circle of Friends

Observing the 3C Measures

\*3C: Closed spaces, crowded places, and close-contact settings

June 24 and July 8

English Circle of Friends (ECF) is an informal lunch time gathering for Japanese students, international students, administrative staff and faculty on campus. Due to the COVID-19 outbreak this year, all participants were requested to wear a face mask and observe physical distancing while engaging in small group conversations. ECF, which normally takes place once/twice a month, is organized by Specially Appointed Associate Professor Raymond Co as part of GU-GLOCAL sponsored activities. At the club, participants can enjoy casual English chat with international students and invited guests such as Coordinators for International Relations (CIRs) from Gifu Prefectural Government office. Here participants can meet and interact with people from different backgrounds and disciplines in a relaxed and informal setting while learning about each other's cultures, etc.



Host: The Center for Japanese Language and Culture, Gifu University Organization for Promotion of Glocalization (GU-GLOCAL) Online

## Nohgaku Video Workshop for International Students

July 15

Nohgaku is a collective term that represents the traditional Japanese performing arts of Noh and Kyogen, both recognized by UNESCO as "Intangible Heritage of Humanity." Since 2005, the Center for Japanese Language and Culture has been hosting annual Nohgaku (Noh and Kyogen) workshops conducted by professional Nohgaku actors. Due to the unprecedented COVID-19 crisis this year, the Nohgaku workshop was conducted through video with a limited number of participants - eight international students from our partner universities. The workshop instructors introduced the history of Nohgaku, and demonstrated the characterized form of laughter that distinguishes Kyogen from Noh. Participants were also able to see short Noh and Kyogen plays performed on the screen. While in-person workshops may be better than workshops conducted on screen, under this exceptional circumstance, the Center hoped that it was able to provide participants an equitable learning experience in developing their understanding of Japanese classical dramas and comedic plays.



## Presentation by Students of Japanese Language and Culture Studies Course

August 9

The Center for Japanese Language and Culture hosted one of its annual events, "Presentation by Students of Japanese Language and Culture Studies Course 2020" with six student participants (from China, Poland, Sweden, Thailand and Vietnam). The presenters spoke eloquently in Japanese presenting their unique viewpoints of Japanese culture and comparing and contrasting them with their own cultures. Attendance at the event, which is normally open to the public every year, was limited only to the university students and staff this year in accordance with regulations for limiting event gatherings. This is the first time that the event was live streamed online with positive feedback from many viewers.



# Career Development Program for International Students 2020 (First Semester)

## What is "Career Development Program for International Students?"

The "Career Development Program for International Students" is the Ministry of Education, Culture, Sports, Science and Technology of Japan (MEXT)-commissioned program to universities and their partner organizations with the aim to increase the number of international students studying and securing employment in Japan. To help realize the goal of extending job opportunities to foreign student graduates in the Japanese labor market, universities, local municipalities and business communities are working together to ensure an ideal environment for international students to enhance their Japanese language proficiency, participate in internship programs, and plan and carry out their future career path. These employment support programs for international students have been implemented by the MEXT-approved alliance between Gifu University and Nagoya University since 2017.

## Career Education

Gifu University's offers a special multi-lingual one-on-one career counseling and guidance for international students in Japanese, English, and Chinese. Customized career educational programs guide individual students in navigating through myriad information, and provide psychological support in going through the difficult task of job-seeking. Individual face-to-face consultations and services were initially carried out in the first semester, but have been moved online amidst concerns for COVID-19.

### Career Education Program

Online

### WEB Meeting with Successful Job-Hunters

## Promotion Activities

Participants of the Career Development Program for International Students kindly offered their assistance to the program promotion:

### Flyer

A flyer was created profiling three participants' successful job-seeking experiences as well as a message from a company representative who highlighted details about their recruitment policy toward foreign nationals.



### Poster

A program poster was displayed at the PR space in Ministop convenience store (on campus).



# Studying Abroad

## Studying Abroad During COVID-19

University of Technology, Sydney

Mayu Takimoto  
Faculty of Education



I was supposed to stay in Sydney from February to November, however, I came back in April to Japan because of COVID-19. Although it was quite a short stay, I enjoyed Sydney with my multinational friends. I continue to study UTS program which is changed to suit for online. It is unfortunate that I came home earlier, but "online study abroad" is also a valuable experience.



# Studying in Japan

## A Dreaming Study Trip Comes True

Cai Haoliang  
United Graduate School of Agricultural Science



Not until I have been here for almost one year that I would like to say: "Wow, it's so wonderful to study at Gifu University". As an English Program student, I could not speak Japanese well before coming to Japan. However, all the staff and students showed great kindness and patience to assist me in all aspects. Besides, free Japanese learning class is available to the foreign students. Now I am accustomed to living here, playing sports, going to travel and cooking with friends. I also feel grateful to have a wonderful professor and a group of lovely lab mates. Their wisdom largely supports me to carry out my research smoothly. In all, I do believe this experience will be a shining part of my life.







# Support for Students Impacted by COVID-19

## Gifu University provided the following COVID-19 financial assistance for international students

- Relief fund (30,000 yen per student) to help cover living expenses
- "Student Support Emergency Fund" for "Continuation of Studies"
- The Short-Term Loan Fund for International Students
- Tuition Waiver
- Provision of funds for hotel quarantine accommodation upon entering Japan from overseas
- Financial support to cover living expenses for students unable to return to their home countries
- Provision of loans for e-Learning

## The following are donations received from the private sectors

- Bales of rice from MIRAI Co., Ltd. and Sakurao Agricultural Production Cooperative
- In-flight meal packages from JAL
- Financial assistance from Gifu Minami Lions Club

## Food and Monetary Aid

On May 29, MIRAI Co., Ltd. and Sakurao Agricultural Production Cooperative donated a total of 400 kilograms of "Hatsushimo" rice variety (a local brand of rice produced in Yamagata City, Gifu Prefecture) in support of Gifu University students living in dormitories.

On July 3, 330 in-flight meal packages (JAL original "SKY TIME Kiwi" beverage and packets of rice crackers) were donated from Japan Airlines (JAL).

On August 12, ¥500,000 monetary donation from Gifu Minami Lions Club was made available for ten international students facing financial difficulties in the midst of the coronavirus pandemic.



## Faculty of Education

### Online Classes for Exchange Student - Huang Li Online



For many of our international students like Ms. Huang Li, a Chinese student from the University of Electronic Science and Technology of China, who was supposed to start her studies at Gifu University this April, the global pandemic has restricted her from coming to Japan. To help make her study transition as smooth as possible, her supervisor organized online classes in the first semester. There were some problems such as occasional disruptions with internet connectivity, but Ms. Li was able to successfully complete all her class work and assignments. The Zoom online technology has been a great support during this pandemic and has allowed students like Ms. Li to maintain close contact with supervisors and tutors at Gifu University.



## Signing of Agreement on Student and Faculty Exchanges

April 2

The partnership with Université de Lille (France) goes back to the exchange agreement between the Faculty of Regional Studies and Université de Lille III in 2015. To further advance our international academic partnership, an Agreement on Student and Faculty Exchanges was concluded between Gifu University and Université de Lille, which has become the largest public university in France that resulted from the merger of three affiliated universities (Université de Lille I, II and III) in 2018.



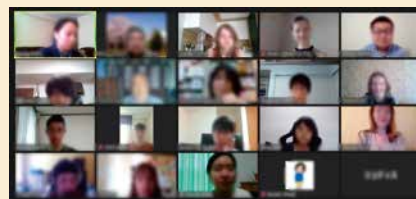
## Faculty of Engineering

### Online Lithuania Study Meetings Online

June 19, July 22

The long-standing relation between Gifu Prefecture and the Republic of Lithuania can be linked to Mr. Chiune Sugihara (1900-1986), a native of Gifu who also served as a Japanese diplomat and vice consul for the Japanese Empire in Kaunas, Lithuania during the Second World War. His heroic act of issuing transit visas to some six thousand Jews fleeing Nazi persecution helped save their lives. This shared accord between Gifu and Lithuania continues today in the bilateral exchanges between Gifu University and Vytautas Magnus University (VMU).

The Faculty of Engineering hosted two separate online Lithuania study meetings in June and July. In the first meeting, Gifu University students participated in information sharing about the COVID-19 pandemic and changing lifestyles with their Lithuanian counterparts from the Japanese culture circle, "Hashi (Bridge)" in VMU. In the second meeting, Ms. Zivile Jomantaite (Lithuanian-born Coordinator for International Relations currently working for the Gifu Prefectural Government) was invited as a special guest to introduce Lithuanian summer foods, festivals, tourist destinations, etc.



**リトアニアの夏：天気**

- 涼しい：15~30℃ (日本の春に似ている)
- 6月は霜がある朝もある
- 8月はコートを着る日もある
- 海の気温は~20℃
- 夜10時~11時まで明るい
- 朝4時~5時から明るい

